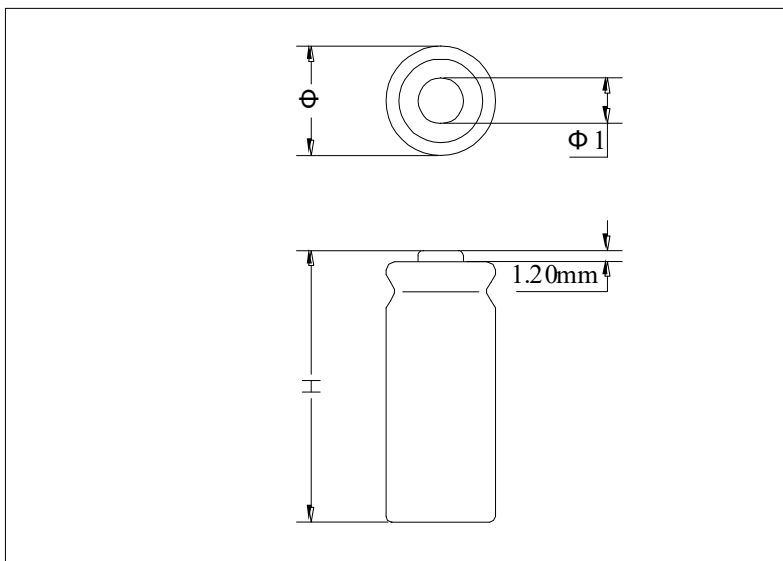


## N500 Specification

### Battery specification

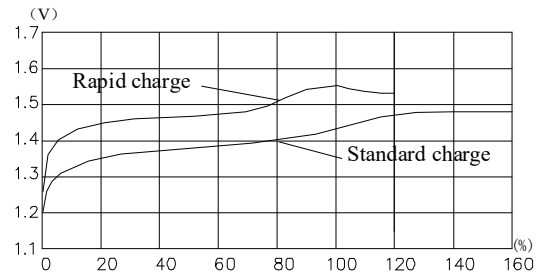
Name	Ni-MH rechargeable battery	
Model	H28NJ500	
Nominal voltage	1.2V	
Application current	50mA-1500mA	
Capacity	Discharge current	0.2C (100mA)
	Minimum	500mAh
	Typical	520mAh
Size (Uncased)	H	28.5± 0.3mm
	Φ	11.8± 0.2mm
	Φ 1	5.0± 0.2mm
Charge	Standard charge	50mA × 16hrs
	Rapid charge	250mA × 144min
Cycle life	≥500 cycle	
Internal impedance	≤35 mΩ	
Weight	About 9.5g	
Temperature range for operation	Standard Charge	0°C to 45°C
	Rapid Charge	10°C to 35°C
	Discharge	-10°C to 55°C
	Storage	-20°C to 45°C

### Sketch map

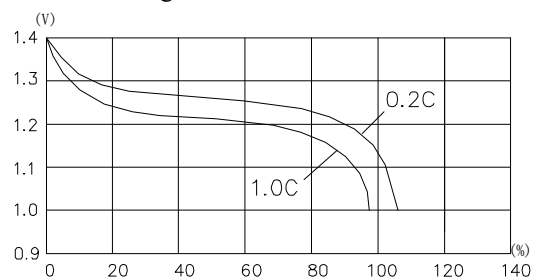


### Characteristics curve

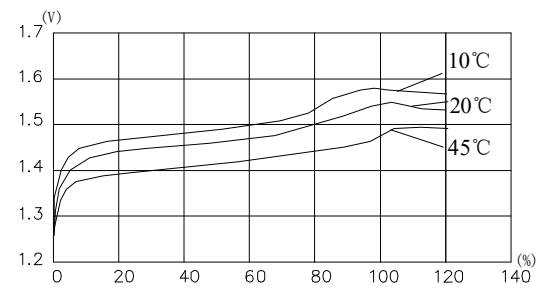
#### 20°C charge characteristic



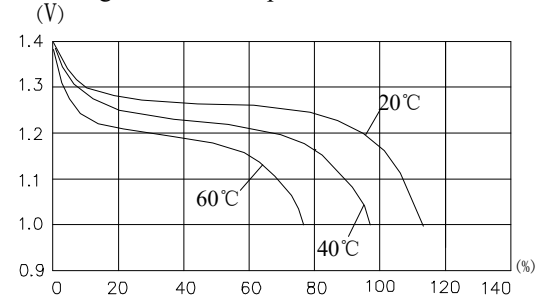
#### 20°C discharge characteristics



#### Charge efficiency temperature characteristics



#### Discharge efficiency temperature characteristics



#### Note:

- Ambient request:  
Temperature: 20°C ± 5°C;  
Humidity: 65% ± 20%.
- The offered information just for reference only.  
Any information beyond our supply,  
please refer to us.