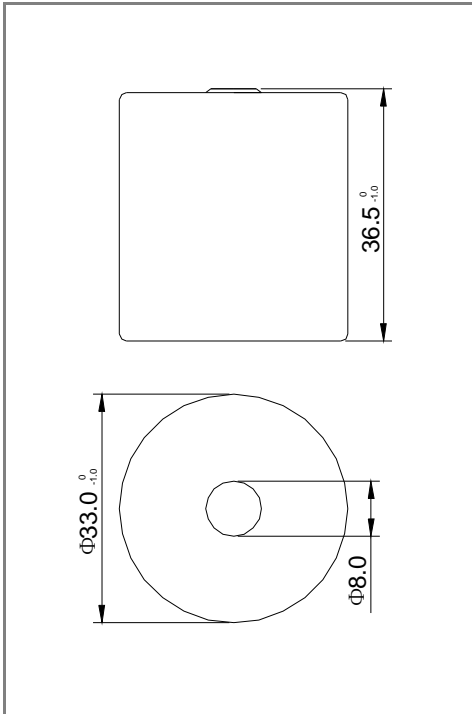
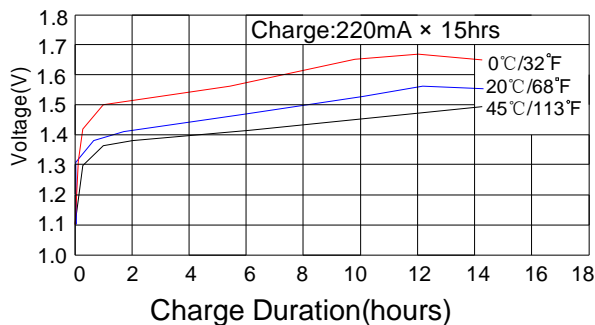


D-1/2D2200H Specifications

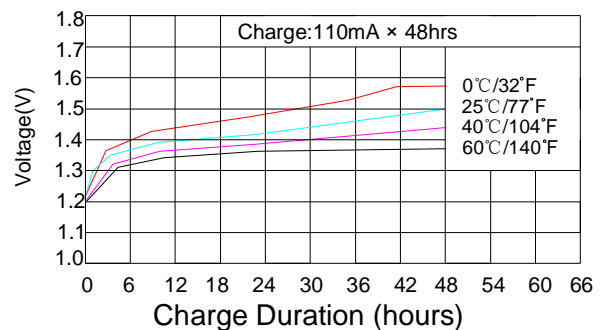


| | |
|---------------------------------------|---------------------|
| Nominal Capacity | 2200mAh |
| Nominal Voltage | 1.2V |
| Internal Impedance (at 1000Hz) | < 12mΩ |
| Charge | |
| Standard Charge (1C) | 220mA x 15h |
| Trickle Charge (0.05C) | 110mA x 1.2h |
| Discharge Cut-off Voltage | 1.0V |
| Max Dimension (with tube) | |
| Diameter | 33.0mm |
| Height | 36.5mm |
| Weight | 75 g |
| Ambient Temperature | |
| Standard charge | 0 ~ 60°C |
| Trickle charge | 0 ~ 60°C |
| Discharge | -20 ~ 70°C |
| Storage | -20 ~ 45°C |

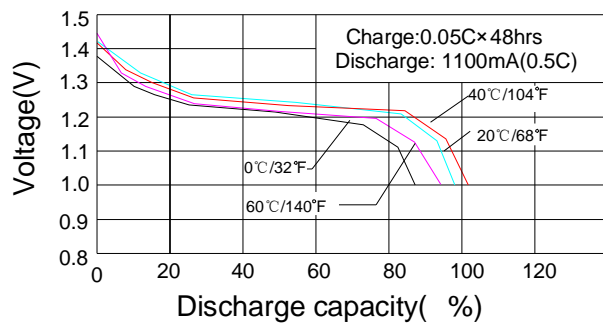
Standard charge characteristics



Trickle charge characteristics



Discharge characteristics



Charge efficiency

